



Skimmer
Suits

RW Suit

Paid in Full

Name _____	Phone _____	E-MAIL _____
Address _____	City _____	State _____ Zip _____
Height _____	Weight _____	Date _____

Please wear the clothes and shoes that you regularly wear skydiving and have someone help you take the measurements to ensure accuracy.

Take shoulder measurements front the point where the shoulder starts to curve downward toward the arm.
Take the measurements with your arms at your sides.

_____ A. Neck
_____ B. Shoulder to shoulder (across the back)
_____ C. Shoulder to wrist (measure to just past bump of wrist)
_____ D. Shoulder to elbow (arm held slightly bent)
_____ E. Biceps (not flexed around fullest part)
_____ F. Wrist
_____ G. Chest (over nipples)
_____ H. Chest under breasts (women only)
_____ I. Indentation at throat straight down to middle of breasts (women only)

For all waist measurements tie a string around your waist to mark the waistline to be sure all measurements are to the same point. The crotch is where all the leg seams of your pants come together. When you take the body length measurements (L, M and N) be sure to stand up as straight as you can.

_____ J. Waist (thinnest part of torso usually in line with the belly button)
_____ K. Indentation at throat to waist
_____ L. Back of neck (the bone at the base of the neck) to waist
_____ M. Body (Indentation at throat down front between legs and back up to base of neck)
_____ N. Hips (fullest part between waist and crotch)
_____ O. Crotch to floor (inseam)
_____ P. Thigh (fullest part, usually at crotch)
_____ Q. Around and just above the knee
_____ R. Knee to floor (measure from a point even with top of kneecap straight down side of leg)
_____ S. Make a tracing of the shoe you wear skydiving. (Do it on the back of the form if it will fit)

Please write down any additional information you think I need to know in order to make the perfect suit for you.

--

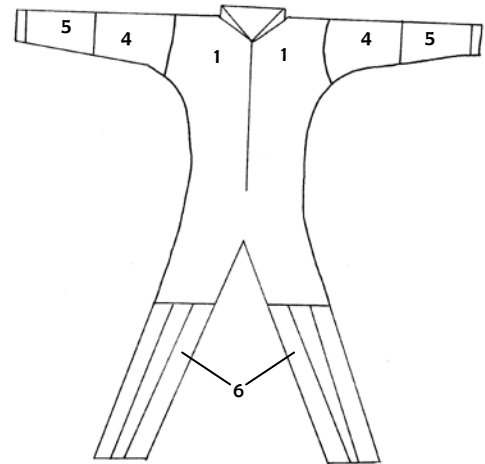
RW Suit Colors and Fabrics

Standard Suit \$385

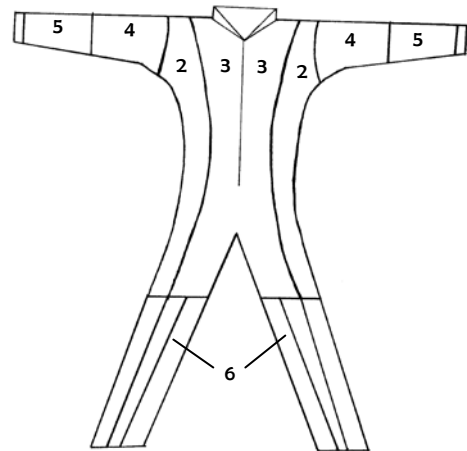
Standard suit includes, cordura and leather booties (choose between large competition or smaller recreational booties), 1 1/2" diameter cordura grippers with front accent color (supplex), arm, inside and outside leg grippers, and inside breast pocket.

Write down your color choices then circle fabric choice if one is available (if you want a faster suit choose nylon over supplex).

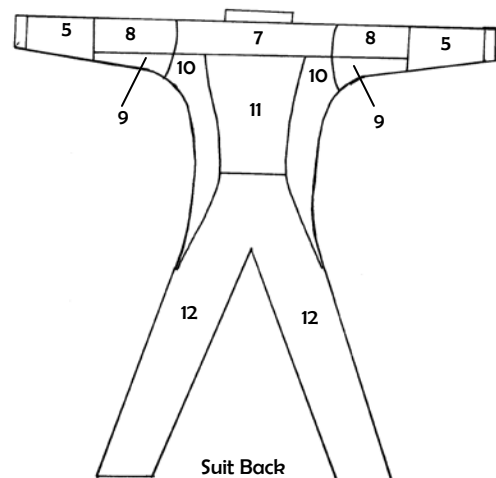
1. Men's Front _____
Supplex Nylon
2. Women's Front Outside _____
Supplex Nylon
3. Women's Front Inside _____
Supplex Nylon
4. Front Upper Arm _____
Supplex Nylon
5. Lower Arm _____
Supplex Spandex
6. Booties Sides _____ Center _____
Cordura
Competition Recreational
7. Back Yoke _____
Supplex
8. Back Upper Arm _____
Supplex
9. Back Lower Arm _____
Spandex
10. Side Back _____
Spandex
11. Center Back _____
Spandex
12. Back Legs _____
Supplex
13. Grippers
Back-Cordura _____
Front-Supplex _____
Optional Tye Dye Front
1st Color _____
2nd Color _____
3rd Color _____
14. Collar _____
Spandex



Men's Suit Front



Women's Suit Front



Suit Back

Options

Tye Dye

Grippers \$40

Grippers & Center Bootie \$50

Grippers, Center Bootie, Collar,
Side & Lower back arm spandex \$70

Cordura Butt \$20

Thigh Pocket \$15

Trim tape Stripes on Grippers \$20 Color _____ 1/4" 3/4"

Trim tape Stripes on Booties \$30 Color _____ 1/4" 3/4"

Trim tape Stripes on Booties & Grippers \$50 Color _____ 1/4" 3/4"

Cotton Grippers \$20

(Made with braided cotton fiber core, finished gripper size is approximately 2" diameter)

Front Grippers Cordura \$20

(Standard is supplex)

Double Fabric Torso and Arms \$30

Swoop Loops and a Set of Hand loops \$20

Suit	\$385	
Options	_____	
Discount	_____	
Shipping	_____	
Subtotal	_____	
Tax	_____	
Total	_____	

Check if
MN Resident
Sales tax is 7.125%

When your order form is completed mail form and check for full payment to:
Skimmer Suits
17455 Halifax Path
Lakeville, MN 55044
If you have questions go to skimmersuits.com