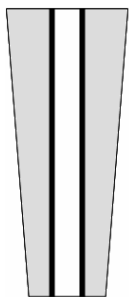
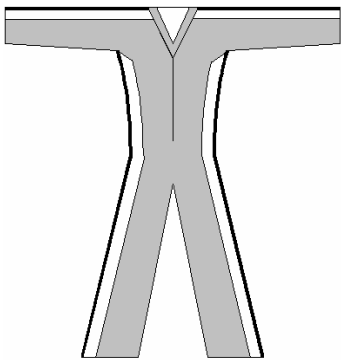


Name _____	Phone _____	E-MAIL _____
Address _____	City _____	State _____ Zip _____
Height _____	Weight _____	Date _____

Take shoulder measurements from the point where the shoulder starts to curve downward toward the arm. Take the measurements with your arms at your sides.

- _____ A. Neck
- _____ B. Shoulder to shoulder (across the back)
- _____ C. Shoulder to wrist (measure just past bump in wrist)
- _____ D. Bicep (flexed)
- _____ E. Wrist
- _____ F. Chest (over nipples)
- _____ G. Waist (thinnest part of torso usually in line with belly button)
- _____ H. Indentation at throat to waist
- _____ I. Back of neck to waist
- _____ J. Body (Indentation at throat down front between legs and back up to base of neck)
- _____ K. Hips (fullest part between waist and crotch)
- _____ L. Crotch to floor (inseam)
- _____ M. Thigh (fullest part)
- _____ N. Around and just above the knee
- _____ O. Knee to floor (Measure from a point even with the top of the kneecap straight down side of leg)
- _____ P. Ankle



Side view of Arm and leg

Color Choices

Base Color



Collar _____

Cuffs: Supplex Spandex

Side Stripe



Tye Dye

Side Stripe \$50

Colors 1st _____ 2nd _____ 3rd _____

Whole suit \$100

Colors 1st _____ 2nd _____ 3rd _____

Trim Tape



Standard Free Fly Suit \$310

Standard free fly suit is constructed of a single layer of 3ply supplex, a 3 1/2" supplex side stripe with nylon trim tape for accent, spandex wrist cuff, and ankle cuff can be spandex with stirrup or supplex with Velcro closures, Velcro neck closure, and inside chest pocket

Options

Mesh Lining \$60

Thigh Pocket \$15

Straight Leg Sport Cuff with stirrup \$30

Magnet Neck Closure \$20

Double Fabric Arms & Legs \$50

1" Soft Arm & Leg Grippers \$40

Color choice _____

Cordura Knees \$20

Cordura Butt \$20

When your order form is
completed mail form and check
for full payment to:
Skimmer Suits
17455 Halifax Path
Lakeville, MN 55044

Suit \$310

Options _____

Discount _____

Shipping _____

Subtotal _____

Tax _____

Total _____

Check if
MN Resident
Sales tax is 7.125%

Comments