



Skimmer
Suits

Big John RW Suit

Paid in Full

Name _____	Phone _____	E-MAIL _____
Address _____	City _____	State _____ Zip _____
Height _____	Weight _____	Date _____

Please wear the clothes and shoes that you regularly wear skydiving and have someone help you take the measurements to ensure accuracy.

Take shoulder measurements from the point where the shoulder starts to curve downward toward the arm.
Take the measurements with you arms at your sides.

<input type="checkbox"/> A. Shoulder to shoulder (across the back)
<input type="checkbox"/> B. Shoulder to wrist (measure to just past bump of wrist)
<input type="checkbox"/> C. Shoulder to elbow (arm held slightly bent)
<input type="checkbox"/> D. Neck
<input type="checkbox"/> E. Biceps (not flexed around fullest part)
<input type="checkbox"/> F. Wrist
<input type="checkbox"/> G. Chest (over nipples)
<input type="checkbox"/> H. Chest under breasts (women only)
<input type="checkbox"/> I. Indentation at throat straight down to middle of breasts (women only)

For all waist measurements tie a string around your waist to mark the waistline to be sure all measurements are to the same point. The crotch is where all the leg seams of your pants come together. When you take the body length measurements (L, M and N) be sure to stand up as straight as you can.

<input type="checkbox"/> J. Waist (thinnest part of torso usually in line with the belly button)
<input type="checkbox"/> K. Indentation at throat to waist
<input type="checkbox"/> L. Back of neck (the bone at the base of the neck) to waist
<input type="checkbox"/> M. Body (Indentation at throat down front between legs and back up to base of neck)
<input type="checkbox"/> N. Hips (fullest part between waist and crotch)
<input type="checkbox"/> O. Thigh (fullest part, usually at crotch)
<input type="checkbox"/> P. Crotch to floor (inseam)
<input type="checkbox"/> Q. Knee to floor (measure from a point even with top of kneecap straight down side of leg)
<input type="checkbox"/> R. Around and just above the knee
<input type="checkbox"/> S. Make a tracing of the shoe you wear skydiving. (Do it on the back of the form if it will fit)

Please write down any additional information you think I need to know in order to make the perfect suit for you.

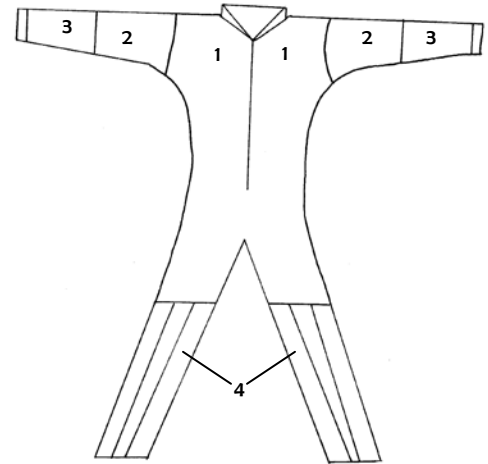
Big John RW Suit Colors and Fabrics

Standard Suit \$385

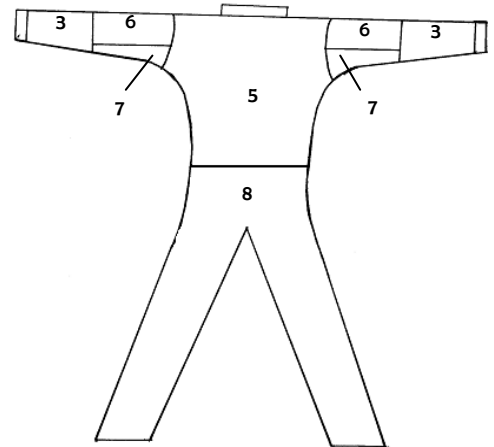
Standard suit includes, cordura and leather booties, 1 1/2" diameter cordura grippers with front accent color (supplex), arm and inside and outside leg grippers, double fabric on sleeves with spandex cuffs and an inside breast pocket.

Write down your color choices then circle fabric choice if one is available (if you want a faster suit choose nylon over supplex).

1. Front Torso _____
Supplex
2. Front Upper Arm _____
Supplex
3. Lower Arm _____
Supplex
4. Booties Sides _____ Center _____
Cordura
5. Back Torso _____
Supplex
6. Back Upper Arm _____
Supplex
7. Back Lower Arm _____
Supplex
8. Back Legs _____
Supplex
9. Grippers
Back-Cordura _____
Front-Supplex _____
Optional Tye Dye Front-Cotton
1st Color _____
2nd Color _____
3rd Color _____
10. Collar _____
Spandex
11. Sleeve Cuffs _____
Spandex



Suit Front



Suit Back

Options

Tye Dye

Grippers \$40

Grippers & Center Bootie \$50

Grippers, Center Bootie, Collar,
Side & Lower back arm spandex \$70

Cordura Butt \$20

Thigh Pocket \$15

Trim tape Stripes on Grippers \$20 Color _____ 1/4" 3/4"

Trim tape Stripes on Booties \$30 Color _____ 1/4" 3/4"

Trim tape Stripes on Booties & Grippers \$50 Color _____ 1/4" 3/4"

Cotton Grippers \$20

(Made with braided cotton fiber core, finished gripper size is approximately 2" diameter)

Front Grippers Cordura \$20

(Standard is supplex)

Double Fabric Torso \$40

Swoop Loops & Set of Hand Loops \$20

Suit \$385

Options _____

Discount _____

Shipping _____

Subtotal _____

Tax _____

Total _____

Check if
MN Resident
Tax is 7.125%

When your order form is completed mail form and check for full payment to:

Skimmer Suits

17455 Halifax Path

Lakeville, MN 55044

If you have questions go to skimmersuits.com